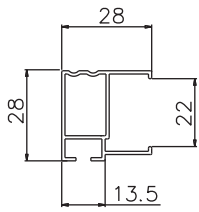


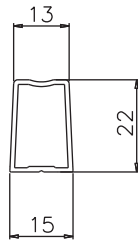
枠付面格子(縦型・クロス・和風井型)

[枠材B] 903-H

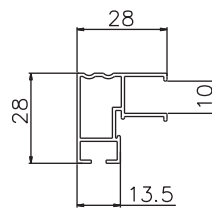


※縦格子タイプ

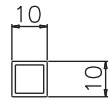
[縦材] 202-H



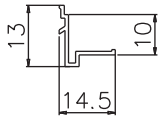
[枠材A] 901-H



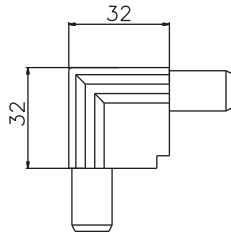
[格子材] 902-H



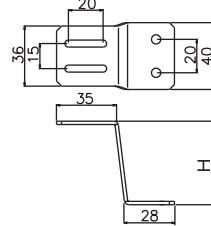
[押縁材] 904-H



[枠コーナー] 910-H

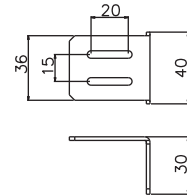


[取付金具] 211□-H



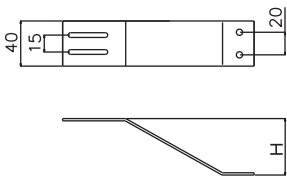
H寸: 50・80・100mm 4個/1set入

[横付金具] 212-H



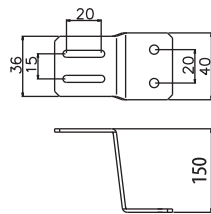
4個/1set入

[中間金具] 213-H



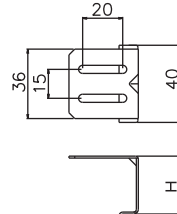
H寸: 50・80mm 2個/1set入

[足長金具] 214-H



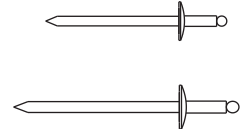
4個/1set入

[カチコミ金具] 215□-H



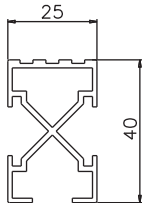
H寸: 30・50mm 4個/1set入

[リベット] 218-H

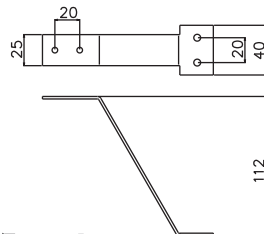


※リベットロング有

[ポール] 305-H

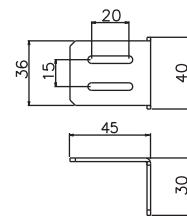
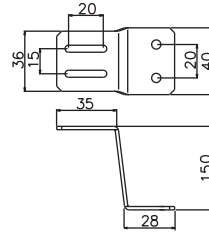


[ポール取付金具] 323-H



2個/1set入

[ポール立用ブラケット] 220-H



各2個/1set入

[化粧キャップ]

